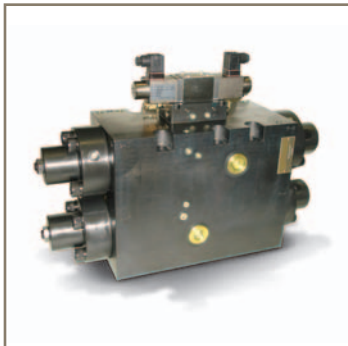


Mill Duty Hydraulics
Directional Valves
Custom Manifolds
Valve Stands
Proportional Valves
Check Valves
Relief Valves
Reducing Valves
Engineered Products



Water and Low Viscosity Fluids

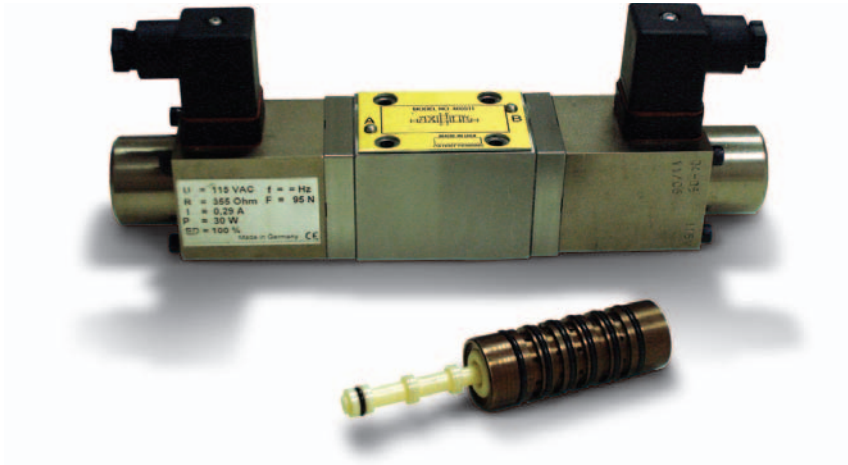
Hydraulic Valve System Solutions



Advanced Technologies

Innovative Ceramic Technology

Fluid Logic offers the water hydraulic industry ceramic-based products as standard materials in our line of directional valves. The ceramic spool/sleeve pilot valve is unsurpassed in performance and reliability. Close tolerance and extremely hard surfaces gives the valve long life with no filtration requirements. In addition, Parker applies the same wear characteristics of ceramics to a full line of Descale Valves and Proportional Flow Control Valves.



Mill Duty Valves

Our valves are specifically designed for 5000 PSI service with water, 95/5 kerosene based roll coolants and other low viscosity fluids. The sealing technology incorporated in the design will provide zero leakage service with any hydraulic fluid; including water glycols, synthetic fluids,

inverted emulsions, and mineral oil. The efficiency of the poppet design allows much greater flow capacity than comparably sized plunger type valves. The user can often select a smaller valve to accomplish the same work.

We manufacture a full range of mill duty valves from DIN 10 (1/2") to DIN 250 (10"). Valves are available in 2-way, 3-way and 4-way configurations. Dual speed (Six-Pack) valves and pump protection modules are also available.



Valves for Water Hydraulic Applications

- Custom Designed Valve Stands
- Proportional Flow Control Valves
- Pressure Control Valves
- Descale Valves
- Directional Valves
- Engineered Turnkey Systems

